



## SHERWOOD MIDDLE SCHOOL Student Voice

### ONE VISION...ONE VOICE

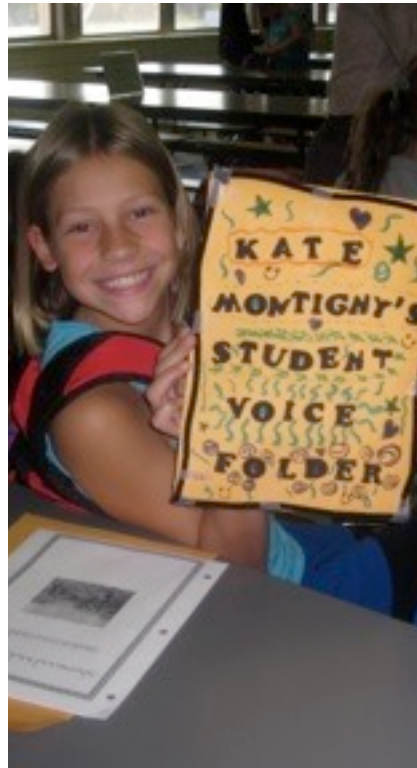
Student voice is dedicated to providing students with opportunities to serve their community.

Any student is welcome to join.

Participation is unlimited providing students and teachers with valuable collaboration experiences.

Parent volunteers are encouraged, and welcome.

Please contact your child's crew teacher leader with ideas, projects, and skills that you are willing to donate.



### SHERWOOD MIDDLE SCHOOL

Jane Lizotte, Principal

[jlizotte@shrewsbury.k12.ma.us](mailto:jlizotte@shrewsbury.k12.ma.us)

Sherwood Middle School  
partners with the  
Shrewsbury Community.



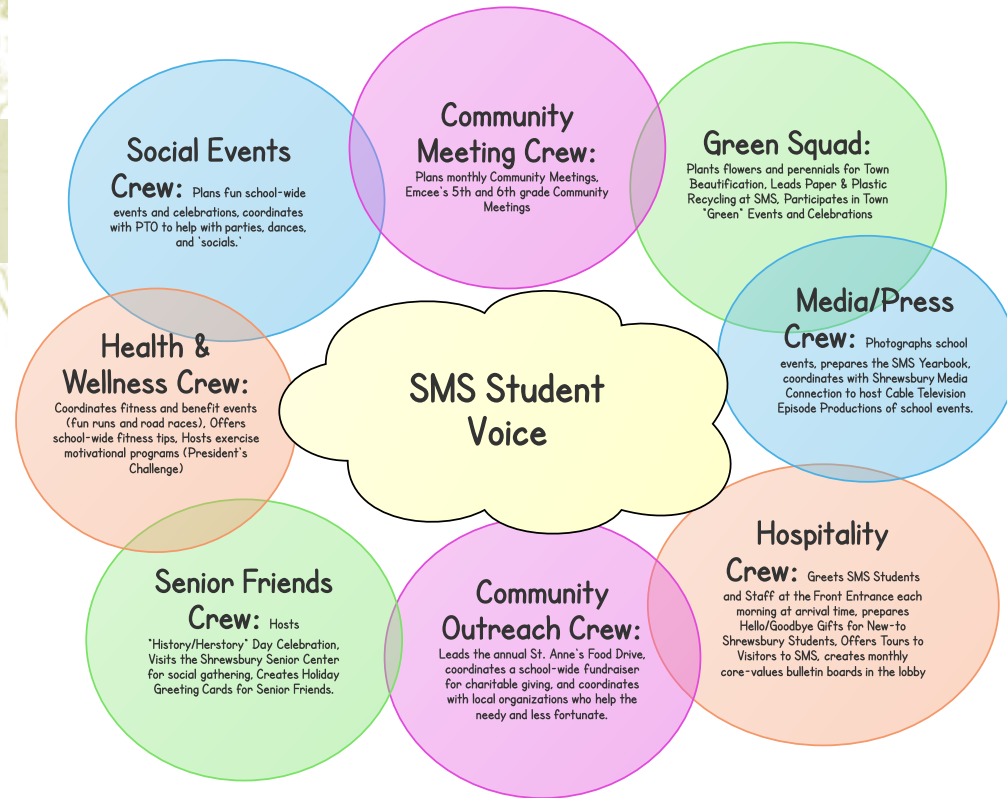
## Students gain real-world experience.

An act of kindness, a labor of love, a mitzvah, a good deed...

There are so many ways to describe the simple act of giving.

Regardless of what you call it, it all begins with one thought, one commitment, one action, one voice.

At Sherwood Middle School, it begins with Student Voice.



Please contact Dr. Lizotte ([jlizotte@shrewsbury.k12.ma.us](mailto:jlizotte@shrewsbury.k12.ma.us)), if you have ideas for future community service projects, or if you are interested in volunteering or donating materials. Thank you!

"No act of kindness, no matter how small, is ever wasted."

~AESOP

